



Ex magnetic sensor Ex RC M20 KST

Features/Options:

- Ex zone 1 and 21
- Cold-resistant version down to -60 °C available
- Thermoset enclosure
- With pre-wired cable

Notes

- 2 mounting nuts are included in delivery
- The actuator is not included in the delivery of the switches

Technical data

Applied standards	EN 60947-5-2, EN 60079-0, EN 60079-18
Enclosure	thermoset, glass-fibre reinforced, impact resistant, self-extinguishing UL 94 V-0
Degree of protection	IP 67 (EN 60079-0 + IEC/EN 60529) IP 66, IP 68, IP 69 (IEC/EN 60529) IP 69K (ISO 20653)
Actuating magnet	series M permanent magnet
Switching system	reed contacts
Switching elements	1 change-over contact
Connection	pre-wired cable, Silicone SIHF
Cable cross-section	3 x 0.75 mm ²
Cable length	2, 5 or 10 m
Short-circuit current I _k	max. 2 A
Ambient temperature	-20 °C ... +70 °C or -60 °C ... +70 °C (depending on the variant)
Mechanical life	> 1 million operations
Impact energy	max. 7 J
Ex marking	⊕ II 2G Ex mb IIC T6 Gb, ⊕ II 2D Ex mb IIIC T80 °C Db IECEx Ex mb IIC T6 Gb Ex mb IIIC T80 °C Db
Approvals	DMT 01 ATEX E 058 X IECEx BVS 07.0007 X

Ordering details

Cold-resistant down to -20 °C



Type
Ex RC M20 1W KST - 5m
Ex RC M20 1W KST - 10m

Material no.
1239855
1377580

Errors and omissions excepted.



Ex magnetic sensor Ex RC M20 KST

Ordering details



Cold-resistant down to -60 °C

Type
Ex RC M20 1W KST - 2m -60°C
Ex RC M20 1W KST - 5m -60°C
Ex RC M20 1W KST - 10m -60°C

Material no.
1445629
1445631
1445633

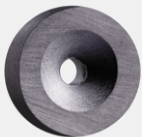
Actuators



M 20 U 13034

Type
M 20 U

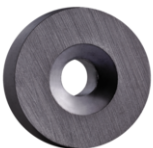
Material no.
1033963



M 50 NU 13033

Type
M 50 NU

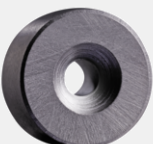
Material no.
1033965



M 100 NU 13032

Type
M 100 NU

Material no.
1033966



M 200 NU 13031

Type
M 200 NU

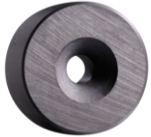
Material no.
1033967

Errors and omissions excepted.



Ex magnetic sensor Ex RC M20 KST

Actuators



M 200 UB 13030

Type
M 200 UB

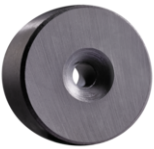
Material no.
1033975



M 300 NU 13029

Type
M 300 NU

Material no.
1033968



M 400 NU 13028

Type
M 400 NU

Material no.
1033970



M 400 UB 13027

Type
M 400 UB

Material no.
1033982



M 100 N 13026

Type
M 100 N

Material no.
1042609



M 200 N 13025

Type
M 200 N

Material no.
1042610



Ex magnetic sensor Ex RC M20 KST

Actuators



M 300 N 13024

Type
M 300 N

Material no.
1042617



M 500 13023

Type
M 500

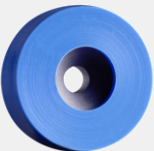
Material no.
1042611



M 700 N 13022

Type
M 700 N

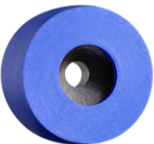
Material no.
1042612



M 100 S 13021

Type
M 100 S

Material no.
1042615



M 200 S 13020

Type
M 200 S

Material no.
1042616



M 300 S 13019

Type
M 300 S

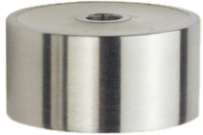
Material no.
1042618

Errors and omissions excepted.



Ex magnetic sensor Ex RC M20 KST

Actuators



M 30 Niro 11265

Type
M 30 Niro

Material no.
1189024



Disc magnet 15 x 4

Type
Disc magnet 15 x 4 mm

Material no.
1452248



Disc magnet 23 x 4

Type
Disc magnet 23 x 4 mm

Material no.
1452242