



Safety foot switch GFSI VD

Features/Options:

- GFSI VD: NC contact 15-16 \ominus in series with NO contact 23-24 (internal wiring)
- With impulse wiping contacts GFSI IK VD: without switching impulse when unlocking foot switch; NO contact 13-14 is converted into positive break NC contact \ominus by internal baffle after pressure point, Safety contact: 13-14 \ominus , Signalling contact: 21-22
- Max. 4 contacts
- Ergonomic pedal design and wide opening in protective shield
- Wiring compartment
- Available on request with special finish in RAL colour tones

Technical data

Applied standards	EN ISO 13849-1, EN 60947-5-1, GS-ET-15
Enclosure	aluminium die-cast, powder-coated
Pedal	aluminium die-cast, powder-coated
Protective shield	aluminium die-cast, powder-coated
Degree of protection	IP 65 to IEC/EN 60529
B_{10d} (10 % load)	200 000
T_M	max. 20 years
Connection	screw connection terminals
Cable cross-section	max. 2.5 mm ² (incl. conductor ferrules)
Cable entry	1 x M20 x 1.5
Contact material	silver
Switching system	slow action, positive break NC contacts \ominus
Switch insert	ES 60 GF VD, ES 60 GF IK VD
Switching elements	1 NO/1 NC or 2 NO/2 NC contacts, type Zb
Actuating force	pressure point approx. 245 N
Utilisation category	AC-15
Rated impulse withstand voltage U_{imp}	6 kV
Rated operating isolation voltage U_i	500 V
Conditional short-circuit current	1100 A
Conventional thermal current I_{the}	GFSI VD: 16 A, GFSI IK VD: 6 A
Rated operating current/voltage I_e/U_e	GFSI VD: 16 A/400 VAC, GFSI IK VD: 6 A/400 VAC
Contact load capacity	max. 400 VAC, GFSI VD: max. 16 A ($\cos \varphi = 1$), GFSI IK VD: max. 6 A ($\cos \varphi = 1$)

Errors and omissions excepted.



Safety foot switch GFSI VD

Technical data

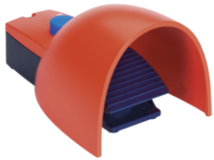
Short-circuit protection	GFSI VD: 16 A gG/gN fuse, GFSI IK VD: 6 A gG/gN fuse
Ambient temperature	-25 °C ... +80 °C
Mechanical life	> 100 000 operations

Approvals



* depending on the variant (see » Certificates)

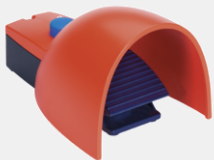
Ordering details



Slow action, 1 NO/1 NC contact
1 NO/1 NC contact

Type
GFSI 1S D 1Ö VD

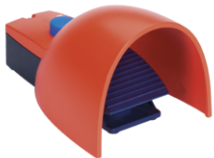
Material no.
1159564



Impulse wiping contact, 1 NO/1
NC contact
1 NO/1 NC contact

Type
GFSI IK 1ÖS D 1Ö VD

Material no.
1184002



Slow action, 2 NO/2 NC
contacts
2 NO/2 NC contacts

Type
GFSI 2S D 2Ö VD

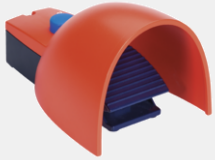
Material no.
1177932

Errors and omissions excepted.



Safety foot switch GFSI VD

Ordering details



Impulse wiping contact, 2 NO/2
NC contacts

Type
GFSI IK 2ÖS D 2Ö VD

Material no.
on request

2 NO/2 NC contacts