



## Safety foot switches GFS VD

### Features/Options:

- GFS VD: NC contact 15-16  $\ominus$  in series with NO contact 23-24 (internal wiring)
- With impulse wiping contacts GFS IK VD: without switching impulse when unlocking foot switch; NO contact 13-14 is converted into positive break NC contact  $\ominus$  by internal baffle after pressure point, Safety contact: 13-14  $\ominus$ , Signalling contact: 21-22
- Max. 4 contacts
- Metal enclosure
- Wiring compartment
- Available on request with special finish in RAL colour tones

### Technical data

Applied standards	EN ISO 13849-1; EN 60947-5-1; GS-ET-15
Enclosure	aluminium die-cast, powder-coated
Pedal	glass-fibre reinforced, shock-proof thermoplastic, self-extinguishing UL 94 V-0
Protective shield	aluminium die-cast, powder-coated
Connection	screw connection terminals
Cable cross-section	max. 2.5 mm <sup>2</sup> (incl. conductor ferrules)
Cable entry	1 x M20 x 1.5
Contact material	silver
Degree of protection	IP 65 to IEC/EN 60529
Switching system	slow action, positive break NC contacts $\ominus$
Switch insert	ES 60 GF VD, ES 60 GF IK VD
Switching elements	1 NO/1 NC or 2 NO/2 NC contacts, type Zb
Actuating force	pressure point approx. 245 N
B <sub>10d</sub> (10 % load)	200 000
T <sub>M</sub>	max. 20 years
Utilisation category	AC-15
Rated impulse withstand voltage U <sub>imp</sub>	6 kV
Rated operating isolation voltage U <sub>i</sub>	500 V
Conditional short-circuit current	1100 A
Conventional thermal current I <sub>the</sub>	GFS VD: 16 A, GFS IK VD: 6 A
Rated operating current/voltage I <sub>e</sub> /U <sub>e</sub>	GFS VD: 16 A/400 VAC, GFS IK VD: 6 A/400 VAC
Contact load capacity	max. 400 VAC, GFS VD: max. 16 A (cos φ = 1), GFS IK VD: max. 6 A (cos φ = 1)

Errors and omissions excepted.



## Safety foot switches GFS VD

### Technical data

Max. fuse rating GFS VD: 16 A gG/gN fuse, GFS IK VD: 6 A gG/gN fuse

Ambient temperature -25 °C ... +80 °C

Mechanical life > 100 000 operations

Approvals

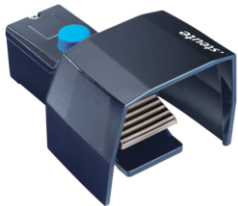
GFS VD:



GFS IK VD:



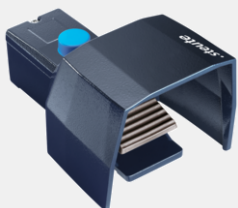
### Ordering details



Slow action  
1 NO/1 NC contact

Type  
GFS 1S D 1Ö VD

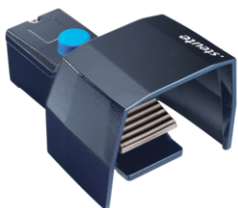
Material no.  
1048696



Impulse wiping contact  
1 NO/1 NC contact

Type  
GFS IK 1ÖS D 1Ö VD

Material no.  
1181480



Slow action  
2 NO/2 NC contacts

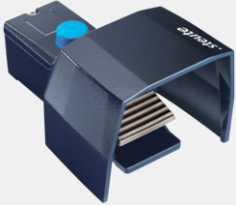
Type  
GFS 2S D 2Ö VD

Material no.  
1048719



## Safety foot switches GFS VD

### Ordering details

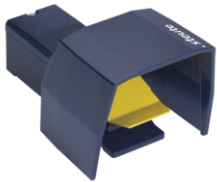


Impulse wiping contact  
2 NO/2 NC contacts

Type  
GFS IK 2ÖS D 2Ö VD  
GFS IK 2S D 2Ö VD

Material no.  
1179113  
1441615

### Accessories



Pedal cover K 4817

Type  
Pedal cover K

Material no.  
on request