

Accessories for emergency pull-wire switches

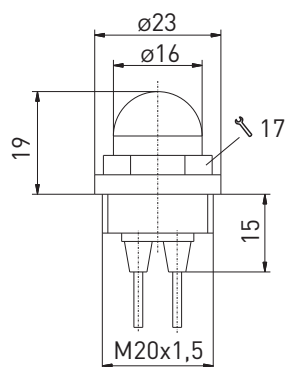
Indicator lamp glow lamp 24 VDC

Material number: 1164937 (Material number old: 01.41.5101)

Features/Options:

- Lamp cap red
- M20 x 1.5
- 24 VDC
- Ordering unit: 1 piece

Dimensions



Technical data

Connection	stranded wires (tinned) 2 x 0.5 mm ² , stranded wire length approx. 120 mm
Rated operating current I _e	80 mA
Weight	11 g